

CO₂ Sensor ZMF-200e-IR

CO₂ sensor for rough applications up to -40 ° C with ATEX and SIL2 certification

- ☑ excellent long-term stability
- ☑ robust stainless steel housing
- ☑ maintenance free by NDIR technology
- ☑ 4...20mA signal output
- ☑ extended operating temperature range -40 ° C
- ☑ SIL2 certification
- ☑ ATEX certification on request
- ☑ attractive price/performance ratio



Technical Specifications

Features

Measuring principle	optical, NDIR* ¹
Gas inlet	via diffusion
Signal Output	4...20mA
Power supply	10...30 V DC
Housing	stainless steel

Operating conditions

Operating temperature:	-40°C...+60°C
Storage Temperature	-40°C...+85°C
relative Humidity	20-90%, non condensing

Sensor

Heating time	ca. 60 seconds
Reaction time	ca. 30 sec

Measuring Range

- ☑ 0...5.000ppm
- ☑ 0...1% vol
- ☑ 0...2 % vol
- ☑ 0...5 % vol
- ☑ 0...20 % vol
- ☑ 0...100 % vol

Certification

The device complies with the standard:

- ☑ EN 50402:2005 + A1:2008

The device has the following certifications:

- ☑ SIL2
- ☑ ATEX auf Anfrage

*¹NDIR: Non-dispersive infrared absorption measurement

We reserve the right to make technical changes

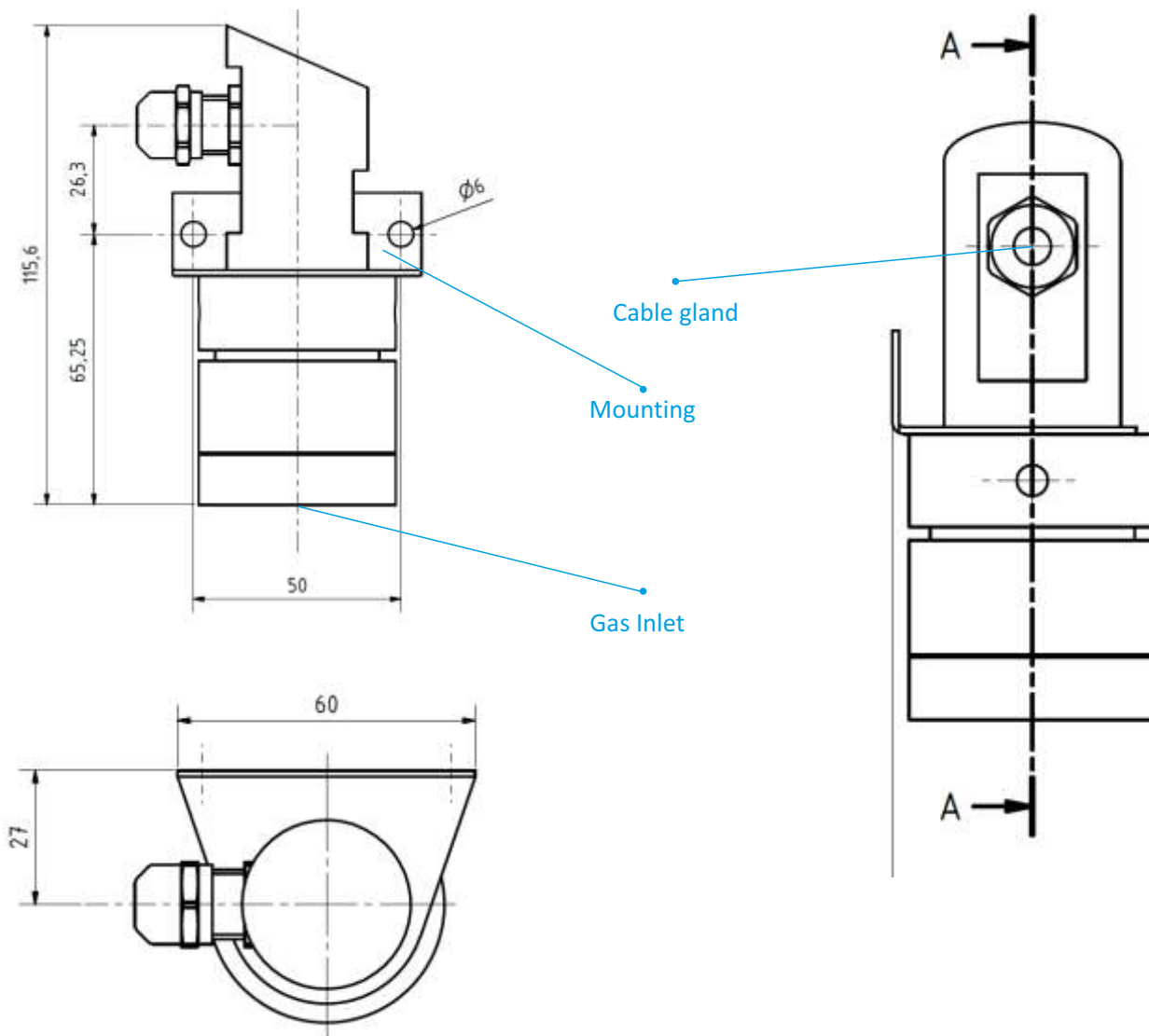
Vertrieb und Beratung: Tel.: +49 (0)3681-8673020
ZILA GmbH Neuer Friedberg 5

E-Mail: info@zila.de
98527 Suhl


www.zila.de

CO₂ Sensor ZMF-200e-IR

Housing and dimensions



Order

Scope of delivery

CO ₂ Sensor ZMF-200e-IR
Installation and operating instructions

Order options

Desired measuring range as mentioned
ATEX certification

We reserve the right to make technical changes

Vertrieb und Beratung: Tel.: +49 (0)3681-8673020
ZILA GmbH Neuer Friedberg 5

E-Mail: info@zila.de
98527 Suhl


www.zila.de